



CARDINAL-SALE PENDING



CARDINAL-SALE PENDING Model number: 47TRR14663AH19

3 beds • 2 baths • 924 sq.ft. • 14' width • 66' depth

Our home building facilities invest in continuous product and process improvements. Plans, dimensions, features, materials, specifications and availability are subject to change without notice or obligation. Renderings and floor plans are representative likenesses of our homes and may differ from the actual homes. We invite you to tour a Home Center near you and inspect the highest value in quality housing available or call (731) 285-0310 to speak with a Home Consultant. Copyright 2017, CMH. All rights reserved.

<https://www.claytonhomesofdymersburg.com>

**CLAYTON HOMES-
DYERSBURG**

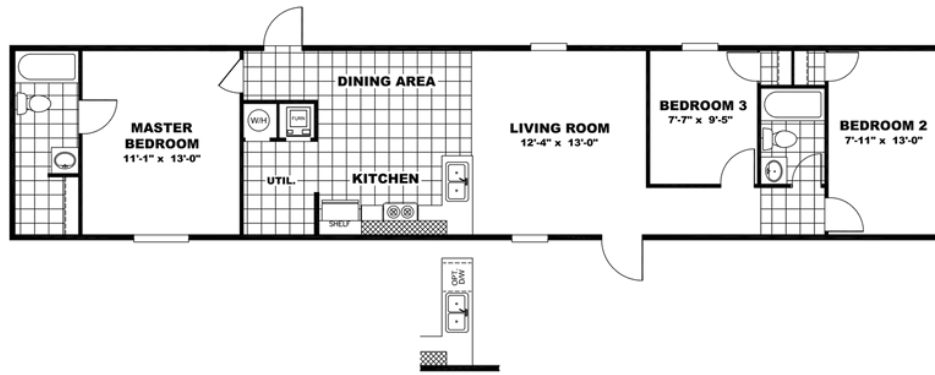
**3895 HIGHWAY 51 SOUTH
DYERSBURG, TN 38024**

Monday - Thursday: 9am to 6pm
Friday: 9am to 6pm
Saturday: 9am to 5pm
Sunday: Closed

(731) 285-0310



CARDINAL-SALE PENDING



OPT. DISHWASHER CAB.

CARDINAL-SALE PENDING

Model number: 47TRR14663AH19

3 beds • 2 baths • 924 sq.ft. • 14' width • 66' depth

Our home building facilities invest in continuous product and process improvements. Plans, dimensions, features, materials, specifications and availability are subject to change without notice or obligation. Renderings and floor plans are representative likenesses of our homes and may differ from the actual homes. We invite you to tour a Home Center near you and inspect the highest value in quality housing available or call (731) 285-0310 to speak with a Home Consultant. Copyright 2017, CMH. All rights reserved.

<https://www.claytonhomesofdyersburg.com>

**CLAYTON HOMES-
DYERSBURG**

3895 HIGHWAY 51 SOUTH
DYERSBURG, TN 38024

Monday - Thursday: 9am to 6pm
Friday: 9am to 6pm
Saturday: 9am to 5pm
Sunday: Closed

(731) 285-0310